

Replacement Parts



List EmberGlo® Steamer Models ES5CT & ES5CT18

*Tap Water Operation
Designed to Operate
Without Distilled Water
Direct Water Supply Hookup*

Automatic Timer/Push Button Operation
Steamer with Direct Water Hookup



Installation and Service Manual - 8449-96

Date Code - Cubic Style Timer Models
ES5CT, ES5CT18 - first construction January 2014

Replacement Model numbers for Old Style Timer Models, that are no longer manufactured are replaced with the Cubic Style Timer:

ES5T is replaced with ES5CT
ES5T18 is replaced with ES5CT18

<i>Models</i>	<i>Description</i>	<i>Volts</i>	<i>BOMs</i>
1500W			
ES5CT	Timer Operation with Direct Water Connect	120V	5400751
ES5CT	Timer Operation with Direct Water Connect	240V	5400753
1800W			
ES5CT18	Timer Operation with Direct Water Connect	120V	5400752

Items listed in this document are replacement parts for the current Models ES5CT & ES5CT18 tap water, direct connect steamers and its components.

- EmberGlo Steamers do not require a separate hood for vapor produced during operation according to the Uniform Mechanical Codes per the International Conference of Building Officials Code.

AVOID ERROR IN PARTS SELECTION. When ordering use complete MIDCO Part Number and Description. Furnish Burner Model Number, Bill of Material Number and Serial Number (if available) from the specification plate found on the product.

IMPORTANT: Availability of parts as well as specifications are subject to change without notice. Please consult factory for item availability.



EmberGlo®

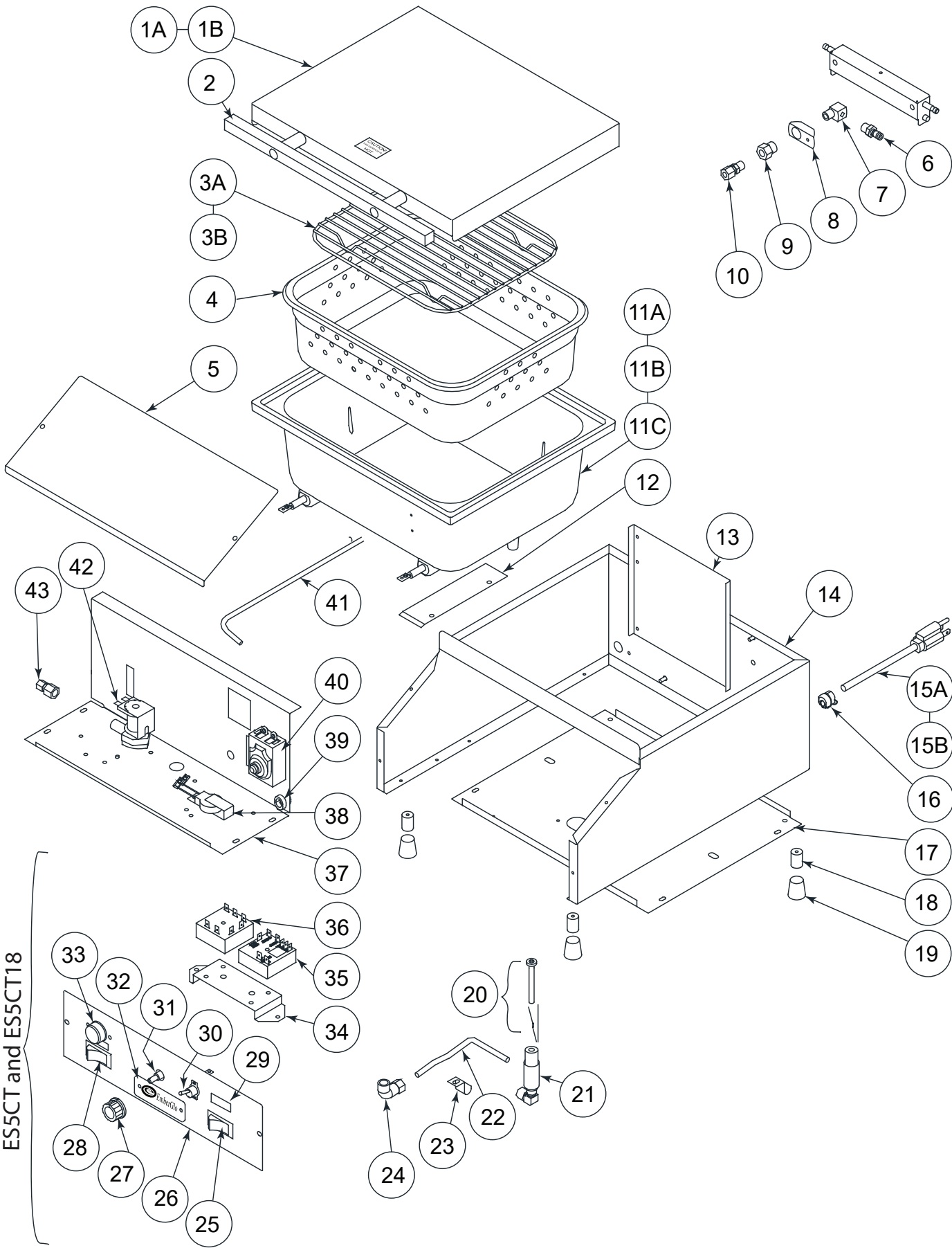
EmberGlo
A Div of Midco® International Inc.
4140 West Victoria Street
Chicago, Illinois 60646
toll free 866.705.0514
tel 773.604.8700
fax 773.604.4070
web www.emberglo.com
e-mail sales@emberglo.com

As an ISO 9001:2008 certified company, we proudly design, manufacture and assemble our products in Chicago, Illinois, USA.

Quality Designed for Proven Performance

822
8472 53
Printed in USA

ES5CT & ES5CT18 - Isometric View



ES5CT & ES5CT18 - Parts List

Part #	Description	Qty	Part #	Description	Qty
1A	1420-80R Lid Assembly	1	30	8423-43 On/Off Toggle Switch - ES5CT / CT18	1
1B	1420-81R Lid Assembly - 1800 Series Only	1	31	8408-92 1 Meg Ohm Potentiometer	1
2	1435-00 Lid Handle Replacement Kit	1	32	5622-00 Name Plate	1
3A	5608-50 Food Pan Grid	1	33	8423-22 Push Button Switch	1
3B	5608-51 Food Pan Grid 1.5" Tall	1	34	1416-80 Cube Timer Pump Bracket ES5CT / CT18	1
4	1401-90 ES5 3-Hole Food Pan	1	35	8406-64 One Shot Timer 844B	1
5	1401-21 Control Box Cover	1	36	8406-92 Recycle Timer 606 - External Resistor *	1
6	8451-47 1/8" Quick Connect Insert	1	37	1417-40 Cube Timer Front Bottom	1
7	8483-15 1/8" Brass Street EL	1	38	1425-00 Buzzer Assembly - 120V	1
8	1409-90 Bulkhead Retainer	1	39	8484-76 Shorty Bush B-500-375	1
9	1408-40 Bulkhead Fitting	1	40	1412-41 Thermal Fuse /Thermostat Kit	1
10	8483-14 1/8" X 1/4" Straight Connector	1	41	1408-50 Water Long Tube	1
11A	1401-61 ES5 Generator - 220V, 1500W	1	42	8402-26 1/4" H ₂ O Solenoid Valve - 120V	1
11B	1401-63 ES5 Generator - 120V, 1800W	1	43	8483-49 1/4 x 1/4t Straight Connect	1
11C	1401-64 ES5 Generator - 120V, 1500W	1			
12	1401-30 ES5 Bulb Clamp	1			
13	1409-00 Stiffener	1			
14	1400-40 Shell	1			
15A	1403-70 ES5 Power Cord-120V	1			
15B	1415-10 ES5 Power Cord-220V	1			
16	8457-46 Strain Relief	1			
17	1401-10 Rear Bottom	1			
18	5661-80 Aluminum Leg	4			
19	8450-25 Socket Tip	4			
20	1411-20 Water Nozzle and Spring	1			
21	1402-70 Water Inlet Assembly	1			
22	1408-60 Short Water Tube	1			
23	1409-60 Tube Clip	1			
24	8483-16 1/8F X 1/4T Comp EL	1			
25	8423-15 On/Off Rocker Switch	1			
26	1417-24 Timer Switch Frt Panel ES5CT / ES5CT18	1			
27	8445-27 Control Knob - ES5CT / CT18	1			
28	8423-35 Mode Rocker Switch - ES5CT / CT18	1			
29	8408-66 Pilot-Light Ready-120V	1			

Not Shown

1408-70	Hose Assembly	1
1420-00	Spring bar	2
1421-45	Back Hinge Kit (less spring bar & spring)	1
1420-40	ES5 Hinge Spring	2
8451-74	Strainer	1

Accessories - Not Shown

5608-70	Three in 1 Basket Kit w/ Handle
5682-60	Tortilla Rack - Grid Style
5608-72	1/2 Size Basket w/ Handle
5608-73	Two of 1/4 Size Basket w/ Handle
5609-15	1/2 Size Perforated Water Pan
8450-62	Steam Generator Cleaning Brush
2070610	Egg Poacher 4 Cup
2070615	Egg Poacher 6 Cup

* NOTE: Old Timer Style Models - ES5T & ES5T18

The EmberGlo **ES5T & ES5T18** timer model steamers will not be manufactured after January 2014. The timers in these models are no longer available and were replaced with cubic style timer (CT Timers) models as follows:

ES5T - replace with ES5CT

ES5T18 - replace with ES5CT18

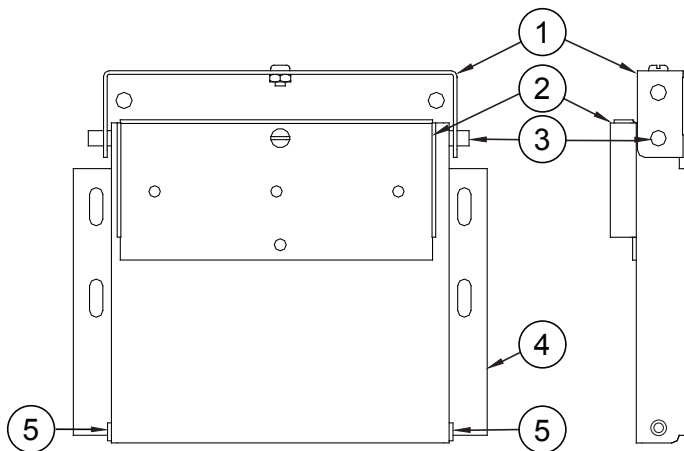
Aside from the timers all of the other parts for the ES5T and ES5T18 remain the same. Call the manufacturer or your local representative for further details or assistance on these old style timer steamers.

ES5CT & ES5CT18 - Replacement Parts

ADJUSTABLE HINGE FOR 2-POSITION LID OPENING (60° OR 90° OPEN)

First construction January 29, 1990 (date code 0590). Steamers built before this date featured a 90° opening lid. Replacement parts for the early construction are no longer available. When replacing order Part Number 1421-45 ADJUSTABLE HINGE RETROFIT KIT.

Part # or Item #	Description	Qty
1	Adjustable Upper Hinge	1
2	Lid Stop Rivetment	1
3	Upper Hinge Bar	1
4	Adjustable Lower Hinge	1
5	5/16" x 3/16" O-Ring	2
Not Shown - (Sold Separately)		
1420-00	Spring bar	2
1420-40	ES5 Hinge Spring	2



As an ISO 9001:2008 certified company, we proudly design, manufacture and assemble our products in Chicago, Illinois, USA.

EmberGlo - A Division of Midco International - 4140 West Victoria Street - Chicago, Illinois 60646

toll free: 866 705 0515 - tel: 773.604.8700 - fax: 773.604.4070 - web: www.emberglo.com - e-mail: sales@emberglo.com

822
8472 53
Printed in USA