

Service Bulletin



All AR and ES SERIES STEAMERS

THERMAL FUSE WITH THERMOSTAT REPLACEMENT

INSTALLATION KIT (#1412-41)

CAUTION: Read and understand this service bulletin thoroughly before starting. Only a trained, experienced service technician should attempt this service procedure.

CAUTION: BEFORE ATTEMPTING SERVICE, SHUT OFF ALL POWER

Kit #1412-41 contains the following:

Description	Part No.	Qty	Description	Part No.	Qty
Thermal Fuse Wire Assembly	1412-40	1	Wiring Label - AR30 & AR60 Models	5636-10	1
#6-32 x .25 SS L-Key Screws	Hardware	2	Wiring Label - AR60T & AR60CTS Models	5600-65	1
#6 SS Lock Washer	Hardware	2	Thermostat	8425-08	1
#6-32 Nut	Hardware	2	Service Bulletin Replacement Instructions	8471-56	1

INSTRUCTIONS FOR REPLACEMENT OF CERAMIC FUSE WITH ATTACHED LEADS

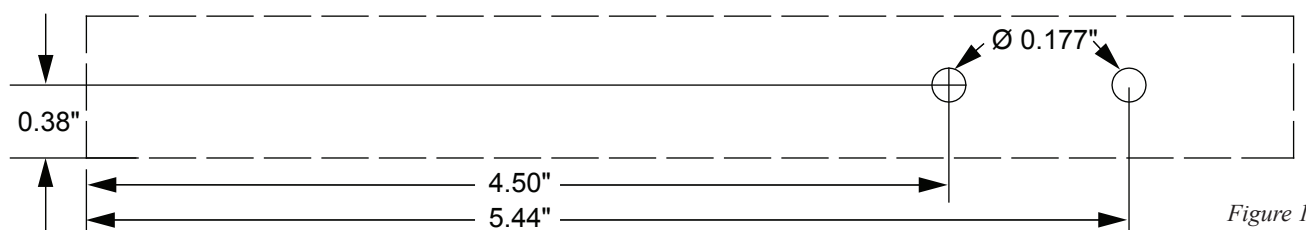


Figure 1

ES Series Steamers

1. Turn off steamer unit and disconnect from power source.
2. Remove access cover.
3. Remove front switch panel screws and move front panel to provide better access.
3. Disconnect wires from the left side of heating element and both sides of thermostat.
4. Gently push back insulation material from the ceramic fuse to expose the mounting screws.
5. Remove the two (2) mounting screws and discard. (New mounting screws are provided).
6. Remove the two (2) thermostat mounting screws.
7. Remove the thermostat tube by pulling it out thru the hole in the inside panel and remove the thermostat.
8. Carefully Insert the thermostat "Tube" (don't damage the copper line) and mount the new thermostat.
9. Install the new ceramic fuse to the generator with the new screws provided.
10. Fasten the wires to the ceramic fuse and thermostat as before.
11. Turn power on and verify for proper steamer operation.

AR Series Steamers

1. Turn off steamer unit and disconnect from power source.
2. Remove back panel and top cover.
3. Drill two Ø 0.177" diameter holes with a #16 drill bit in the generator mounting plate as shown in Figure 2. Or use the Template - Figure 1
4. Clean drill filings from the holes.
5. Install thermal fuse assembly with provided hardware.
6. Disconnect wires from both sides of thermostat..
7. Remove thermostat mounting screws and slide the thermostat "Tube" out of the generator.
8. Connect fuse in series between the heat generator and thermostat. (Refer to supplied wiring label).
9. Install back panel and top cover.
10. Turn power on and verify for proper steamer operation.

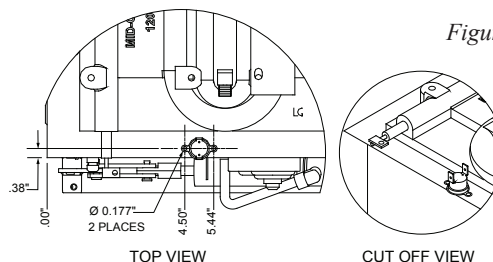


Figure 2



EmberGlo

EmberGlo
A Div of Midco® International Inc.
4140 West Victoria Street
Chicago, Illinois 60646
toll free 866.705.0515
tel 773.604.8700
fax 866.580.8700
web www.emberglo.com
e-mail sales@emberglo.com

AVOID ERROR IN PARTS SELECTION. When ordering use complete EmberGlo Part Number and Description. Furnish the Product Model Number, Bill of Material Number and Serial Number (if available) from the specification plate found on the product.

IMPORTANT: Availability of parts as well as specifications are subject to change without notice. Please consult factory for item availability.

SAFETY INFORMATION TERMS: The following terms are used to identify hazards, safety precaution of special notations and have standard meanings throughout this manual. They are printed in all capital letters using a bold type face as shown below, and preceded by the exclamation mark symbol. When you see the safety alert symbol and one of the safety information terms as shown below, be aware of the hazard potential.



DANGER: Identifies the most serious hazards which will result in severe personal injury or death.
WARNING: Signifies a hazard that could result in personal injury or death.
CAUTION: Identifies unsafe practices which would result in minor personal injury or product and property damage.



As an ISO 9001:2008 certified company, we proudly design, manufacture and assemble our products in Chicago, Illinois, USA.

Quality Designed for Proven Performance

822
8471 56
Printed in USA