



★MADE in the USA★

Valve Stem Extension Replacement Gas Broiler 25 Series Kit # 4625-70R Gas Broiler 31 & 41 Series Kit # 4825-03R



CAUTION: Read and understand this service bulletin thoroughly before starting. Only a trained, experienced service technician should attempt this service procedure.

Gas Broiler 25 Series - Kit #4625-70R Includes:

Part #	Description	Qty
4625-70	Valve Stem Extension	1
6256-50	Spud Bag and Tie	1
8476-12	Service Bulletin	1
HW1-085	6/32 x1" Slot Round HD MS 18-8SS	1
HW2-132	6/32 Hex Nut (Brass)	1

Gas Broiler 31 & 41 Series - Kit #4825-03R Includes:

Part #	Description	Qty
4825-03	Valve Stem Extension	1
6256-50	Spud Bag and Tie	1
8476-12	Service Bulletin	1
HW1-085	6/32 x1" Slot Round HD MS 18-8SS	1
HW2-132	6/32 Hex Nut (Brass)	1



Figure 1 - Valve Stem with Cotter Pin in Locked Position



Figure 2 - Valve Stem with Cotter Pin in Un-locked Position



Figure 4 - Valve Stem with Nut and Bolt (View 1 - Showing Nut)



Figure 5 - Valve Stem with Nut and Bolt (View 2)

Valve Stem Extension Replacement Procedure for All Models

1. Remove the control knobs from broiler unit and set aside.
2. Remove front panel by removing two screws securing it in front and set aside.
3. Use pliers to bend and remove cotter pin. When cotter pin is bent back as straight as possible, tap gently on cotter pin legs until a good grip is secured. Then pull pin out. See *Figures 1 and 2*
4. Remove valve stem (4625-70 or 4825-03) and replace with new valve stem.
5. Insert bolt and tighten with nut as shown in *Figure 3, 4 and 5*.
6. For broiler models 31 and 41 Repeat steps 3 - 5 on second valve, if needed.
7. Replace front panel and secure it with two screws.
8. Replace knobs. If the knob has a loose fit over the valve stem, use a straight edge (flat head screwdriver) to carefully widen the gap of the valve stem. Do this in small increments until the knob fits securely onto the valve stem.

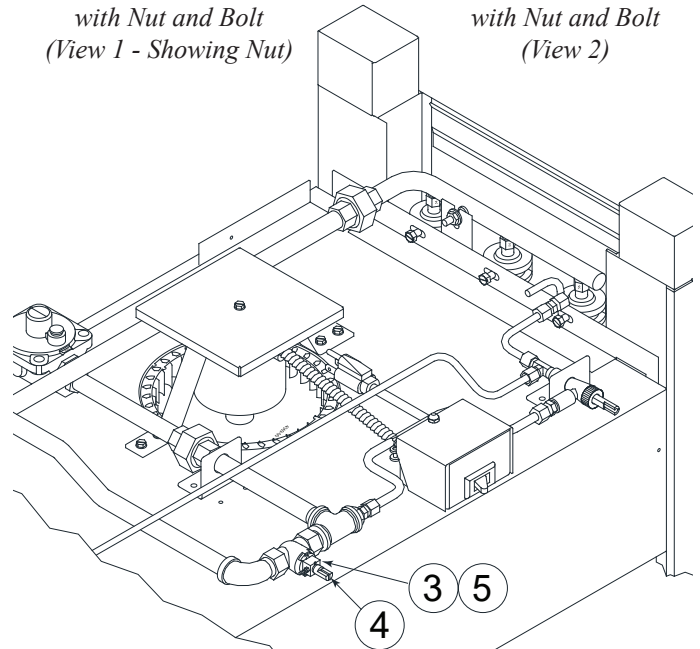


Figure 3 - Underside of Gas Broiler (Counter top 25 Series Model shown)
Numbers Correspond with Procedure Steps



EmberGlo

EmberGlo
A Div of Midco® International Inc.
4140 West Victoria Street
Chicago, Illinois 60646
toll free 866.705.0515
tel 773.604.8700
fax 866.580.8700
web www.emberglo.com
e-mail sales@emberglo.com

SAFETY INFORMATION TERMS: The following terms are used to identify hazards, safety precaution of special notations and have standard meanings throughout this manual. They are printed in all capital letters using a bold type face as shown below, and preceded by the exclamation mark symbol. When you see the safety alert symbol and one of the safety information terms as shown below, be aware of the hazard potential.



- DANGER:** Identifies the most serious hazards which will result in severe personal injury or death.
- WARNING:** Signifies a hazard that could result in personal injury or death.
- CAUTION:** Identifies unsafe practices which would result in minor personal injury or product and property damage.