

Replacement Parts



List EmberGlo® Steamer

Models ES5PBS & ES5PBS18

*Tap Water Operation
Designed to Operate
Without Distilled Water
Self Contained Water Supply*



★ MADE in the USA ★

Push Button Operation Steamer with Water Pan

Installation and Service Manual - 8449-96
Date Code - ES5PBS & ES5PBS18
first constructed October, 2007

Items listed are replacement parts for the current Model ES5PBS & ES5PBS18 Tap Water Steamer and its components.

- EmberGlo Steamers do not require a separate hood for vapor produced during operation according to the Uniform Mechanical Codes per the International Conference of Building Officials Code.

| <i>Models</i> | <i>Description</i> | <i>Volts</i> | <i>BOMs</i> |
|---------------|--------------------------------------|--------------|-------------|
| <i>1500W</i> | | | |
| ES5PBS | Push Button Operation with Water Pan | 120V | 5400730 |
| ES5PBS | Push Button Operation with Water Pan | 240V | 5400737 |
| <i>1800W</i> | | | |
| ES5PBS18 | Push Button Operation with Water Pan | 120V | 5400740 |



EmberGlo®

EmberGlo
A Div of Midco® International Inc.
4140 West Victoria Street
Chicago, Illinois 60646
toll free 866.705.0515
tel 773.604.8700
fax 773.604.4070
web www.emberglo.com
e-mail sales@emberglo.com

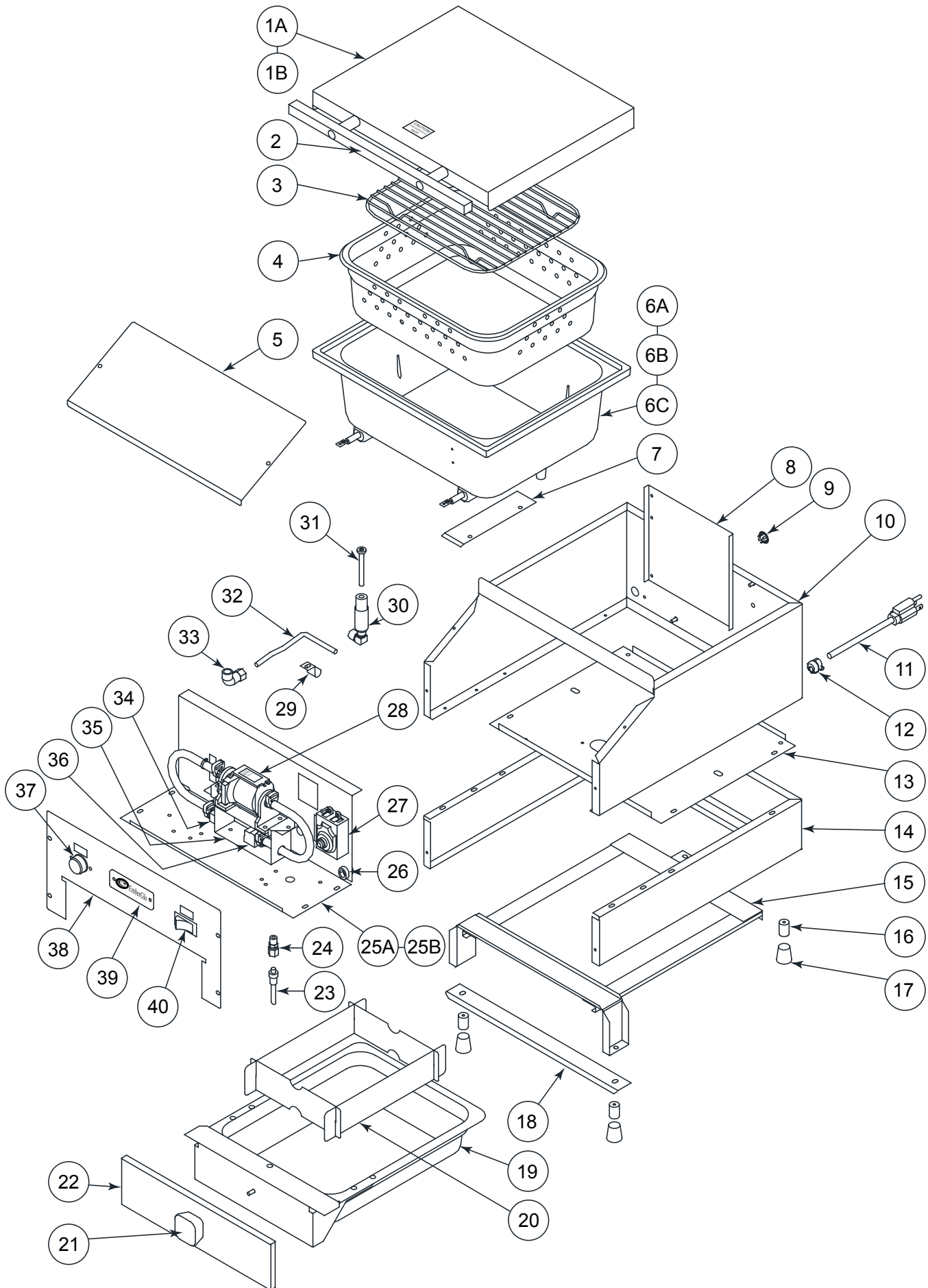
AVOID ERROR IN PARTS SELECTION. When ordering use complete EmberGlo Part Number and Description. Furnish Model Number, Bill of Material Number and Serial Number (if available) from the specification plate found on the product.

IMPORTANT: Availability of parts as well as specifications are subject to change without notice.

Quality Designed for Proven Performance

416
8472 99
Printed in USA

ES5PBS & ES5PBS18 - Exploded View



ES5PBS & ES5PBS18 - Parts List

| Item | Part # | Description | Qty | Item | Part # | Description | Qty |
|------|----------|---------------------------------|-----|------|---------|--------------------------|-----|
| 1A | 1420-80R | Lid Assembly | 1 | 30 | 1402-70 | Water Inlet Assembly | 1 |
| 1B | 1420-81R | Lid Assembly - 1800 Series ONLY | 1 | 31 | 1411-20 | Water Nozzle with Spring | 1 |
| 2 | 1435-00 | Lid Handle Replacement Kit | 1 | 32 | 1415-80 | Water Tube Assembly | 1 |
| 3 | 5608-50 | Food Pan Grid | 1 | 33 | 8483-37 | 1/8F X 1/4T Comp EL | 1 |
| 4 | 1401-90 | ES5 Food Pan | 1 | 34 | 8483-15 | 1/8" Brass Street EL | 1 |
| 5 | 1401-21 | Control Box Cover - ES5PBS | 1 | 35 | 1417-00 | Pump Bracket | 1 |
| 6A | 1401-61 | ES5 Generator - 220V, 1500W | 1 | 36 | 8483-36 | 1/8 Brass EL | 1 |
| 6B | 1401-63 | ES5 Generator - 120V, 1800W | 1 | 37 | 8423-22 | Push Button Switch | 1 |
| 6C | 1401-64 | ES5 Generator - 120V, 1500W | 1 | 38 | 1417-22 | Switch Panel - ES5PBS | 1 |
| 7 | 1401-30 | ES5 Bulb Clamp | 1 | 39 | 5622-00 | Name Plate | 1 |
| 8 | 1409-00 | Stiffener | 1 | 40 | 8423-15 | On/Off Rocker Switch | 1 |
| 9 | 8451-89 | Plug Button HS51156-K1110 | 2 | | | | |
| 10 | 1400-40 | Shell Weldment | 1 | | | | |
| 11 | 1403-70 | ES5 Power Cord-120V | 1 | | | | |
| 12 | 8457-46 | Strain Relief | 1 | | | | |
| 13 | 1401-10 | Rear Bottom | 1 | | | | |
| 14 | 1407-10 | Water Pan Shell Weldment | 1 | | | | |
| 15 | 1406-50 | Water Pan Slide Weldment | 1 | | | | |
| 16 | 5661-80 | Aluminum Leg | 4 | | | | |
| 17 | 8450-25 | Socket Tip | 4 | | | | |
| 18 | 1407-70 | Leg Channel | 1 | | | | |
| 19 | 1402-10 | Water Pan | 1 | | | | |
| 20 | 1411-00 | Water Pan Baffle Set | 1 | | | | |
| 21 | 8445-01 | Cover Knob | 1 | | | | |
| 22 | 1408-90 | Water Pan Front | 1 | | | | |
| 23 | 1416-00 | Dip Tube Assembly | 1 | | | | |
| 24 | 8483-14 | 1/8" x 1/4" Straight Connector | 1 | | | | |
| 25A | 1417-40 | Front Bottom | 1 | | | | |
| 25B | 1417-41 | Front Bottom-220V | 1 | | | | |
| 26 | 8484-76 | Shorty Bush B-500-375 | 2 | | | | |
| 27 | 1412-41 | Thermal Fuse /Thermostat Kit | 1 | | | | |
| 28 | 1435-12 | Pump Replacement Kit | 1 | | | | |
| 29 | 1409-60 | Tube Clip | 1 | | | | |

Not Shown

| | | |
|---------|--|---|
| 1410-50 | Insulation Kit (Sides, Back, Front & Bottom) | 1 |
| 1411-60 | ES5PBS Wire Set (Less Power Cord) | 1 |
| 1420-00 | Spring Bar | 2 |
| 1420-40 | ES5 Hinge Spring | 2 |
| 1421-45 | Back Hinge Kit (Less Spring Bar & Spring) | 1 |
| 8451-74 | Strainer | 1 |

Accessories - Not Shown

| | |
|---------|----------------------------------|
| 5608-70 | Three in 1 Basket Kit w/ Handle |
| 5682-60 | Tortilla Rack - Grid Style |
| 5608-72 | 1/2 Size Basket w/ Handle |
| 5608-73 | Two of 1/4 Size Basket w/ Handle |
| 8450-62 | Steam Generator Cleaning Brush |
| 2070610 | Egg Poacher 4 Cup |
| 2070615 | Egg Poacher 6 Cup |

ADJUSTABLE HINGE FOR 2-POSITION LID OPENING (60° OR 90° OPEN)

First construction January 29, 1990 (date code 0590). Steamers built before this date featured a 90° opening lid. Replacement parts for the early construction are no longer available. When replacing order Part Number 1421-45 ADJUSTABLE HINGE RETROFIT KIT.

| Part # or Item # | Description | Qty |
|------------------|------------------------|-----|
| 1 | Adjustable Upper Hinge | 1 |
| 2 | Lid Stop Rivetment | 1 |
| 3 | Upper Hinge Bar | 1 |
| 4 | Adjustable Lower Hinge | 1 |
| 5 | 5/16" x 3/16" O-Ring | 2 |

Not Shown - (Sold Separately)

| | | |
|---------|------------------|---|
| 1420-00 | Spring bar | 2 |
| 1420-40 | ES5 Hinge Spring | 2 |

