



# Replacement Parts List

## EmberGlo® Steamer Models ES5CT, ES5CT18 & ES5PC

*Tap Water Operation  
Designed to Operate  
Without Distilled Water  
Direct Water Supply Hookup*



★MADE in the USA★

Automatic Timer/Push Button Operation  
Steamer with Direct Water Hookup

Installation and Service Manual - 8449-96

Date Code - Cubic Style Timer Models  
ES5CT, ES5CT18 - first construction January 2014  
ES5PC - first construction January 2015

Replacement Model numbers for Old Style Timer Models, that are no longer manufactured are replaced with the Cubic Style Timer:

ES5T is replaced with ES5CT  
ES5T18 is replaced with ES5CT18

<i>Models</i>	<i>Description</i>	<i>Volts</i>	<i>BOMs</i>
<i>1500W</i>			
ES5CT	Timer Operation with Direct Water Connect	120V	5400751
ES5CT	Timer Operation with Direct Water Connect	240V	5400753
ES5PC	Fixed Timer Operation with Direct Water Connect	120V	5400761
<i>1800W</i>			
ES5CT18	Timer Operation with Direct Water Connect	120V	5400752

Items listed in this document are replacement parts for the current Models ES5CT, ES5CT18 & ES5PC tap water, direct connect steamers and its components.

- EmberGlo Steamers do not require a separate hood for vapor produced during operation according to the Uniform Mechanical Codes per the International Conference of Building Officials Code.

**AVOID ERROR IN PARTS SELECTION.** When ordering use complete EmberGlo Part Number and Description. Furnish Model Number, Bill of Material Number and Serial Number (if available) from the specification plate found on the product.

**IMPORTANT:** Availability of parts as well as specifications are subject to change without notice.



**EmberGlo**

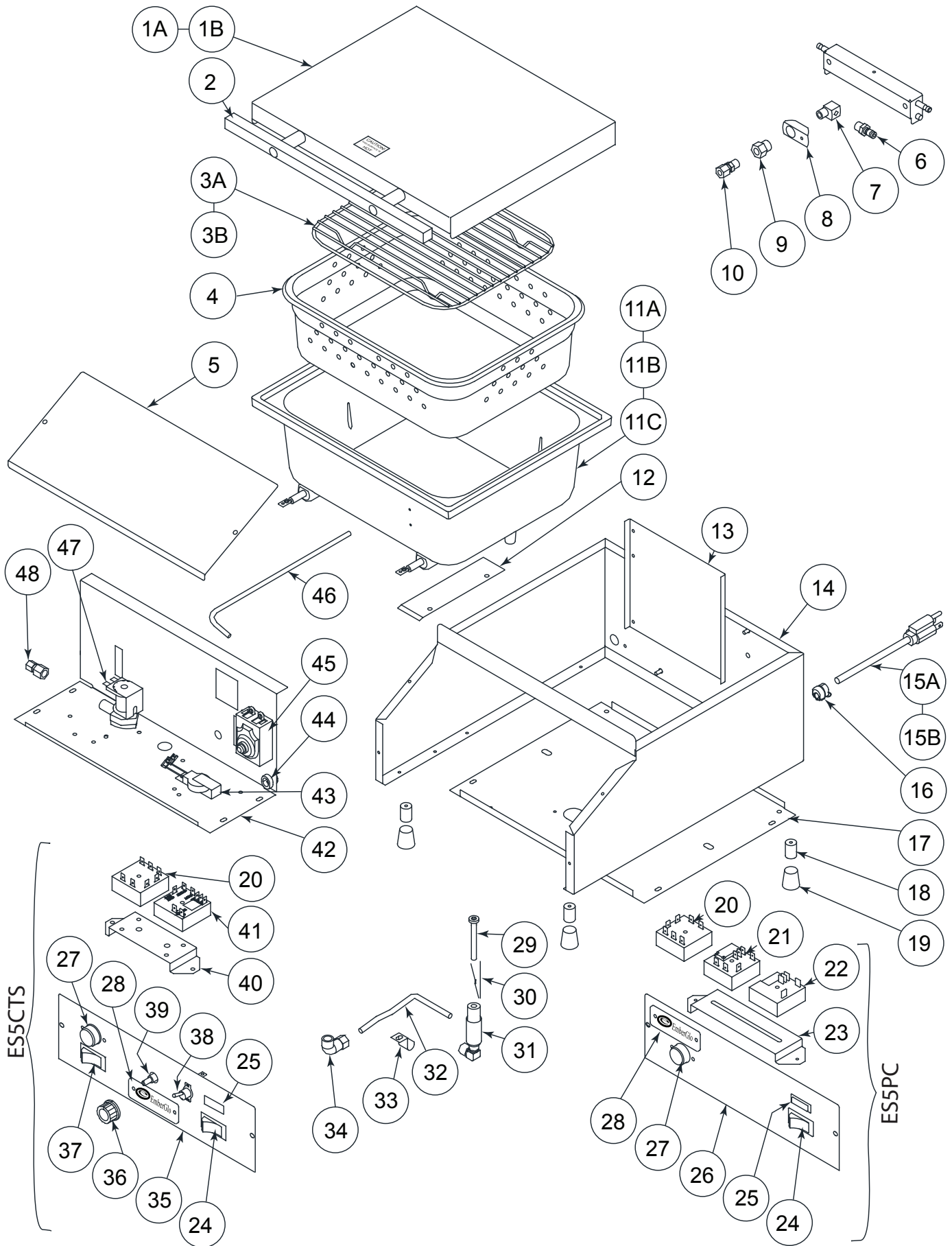
EmberGlo  
A Div of Midco® International Inc.  
4140 West Victoria Street  
Chicago, Illinois 60646  
toll free 866.705.0514  
tel 773.604.8700  
fax 773.604.4070  
web www.emberglo.com  
e-mail sales@emberglo.com

*As an ISO 9001:2008 certified company, we proudly design, manufacture and assemble our products in Chicago, Illinois, USA.*

*Quality Designed for Proven Performance*

416  
8472 53  
Printed in USA

# ES5CT, ES5CT18 & ES5PC - Isometric View



# ES5CT, ES5CT18 & ES5PC - Parts List

Part #	Description	Qty	Part #	Description	Qty
1A	1420-80R Lid Assembly	1	<b>ES5CT &amp; ES5CT18 Front Switch Panel &amp; Timers</b>		
1B	1420-81R Lid Assembly - 1800 Series Only	1	24	8423-15 On/Off Rocker Switch	1
2	1435-00 Lid Handle Replacement Kit	1	35	1417-24 Timer Switch Frt Panel ES5CT / ES5CT18	1
3A	5608-50 Food Pan Grid	1	36	8445-27 Control Knob - ES5CT / CT18	1
3B	5608-51 Food Pan Grid 1.5" Tall	1	37	8423-35 Mode Rocker Switch - ES5CT / CT18	1
4	1401-90 ES5 3-Hole Food Pan	1	25	8408-66 Pilot-Light Ready-120V	1
5	1401-21 Control Box Cover	1	38	8423-43 On/Off Toggle Switch - ES5CT / CT18	1
6	8451-47 1/8" Quick Connect Insert	1	39	8408-92 1 Meg Ohm Potentiometer	1
7	8483-15 1/8" Brass Street EL	1	28	5622-00 Name Plate	1
8	1409-90 Bulkhead Retainer	1	27	8423-22 Push Button Switch	1
9	1408-40 Bulkhead Fitting		40	1416-80 Cube Timer & Pump Bracket ES5CT / CT18	1
10	8483-14 1/8" X 1/4" Straight Connector		41	8406-64 One Shot Timer 844B	1
11A	1401-61 ES5 Generator - 220V, 1500W	1			
11B	1401-63 ES5 Generator - 120V, 1800W	1	42	1417-40 Cube Timer Front Bottom	1
11C	1401-64 ES5 Generator - 120V, 1500W	1	43	1425-00 Buzzer Assembly – 120V	1
12	1401-30 ES5 Bulb Clamp	1	44	8484-76 Shorty Bush B-500-375	1
13	1409-00 Stiffener	1	45	1412-41 Thermal Fuse /Thermostat Kit	1
14	1400-40 Shell	1	46	1408-50 Water Long Tube	1
15A	1403-70 ES5 Power Cord-120V	1	47	8402-26 1/4" H <sub>2</sub> O Solenoid Valve – 120V	1
15B	1415-10 ES5 Power Cord-220V	1	48	8483-49 1/4 x 1/4t Straight Connect	1
16	8457-46 Strain Relief	1			
17	1401-10 Rear Bottom	1	<b>Not Shown</b>		
18	5661-80 Aluminum Leg	4	1410-50	Insulation Kit (Sides, Back, Front & Bottom)	1
19	8450-25 Socket Tip	4	1411-70	Electrical Wire Kit (less power cord)	1
<b>ES5PC Front Switch Panel - Fixed Timer</b>			1420-00	Spring bar	2
20	8406-92 Recycle Timer 606 - External Resistor *	1	1421-45	Back Hinge Kit (less spring bar & spring)	1
21	8406-91 One Shot Timer 8448 - ES5CT /CT18	1	1420-40	ES5 Hinge Spring	2
22	8406-67 One Shot Timer 8448 - ES5PC /PC18	1	8451-74	Strainer	1
23	1416-90 Cube Timer & Pump Bracket ES5PC /PC18	1			
24	8423-15 On/Off Rocker Switch	1	<b>Accessories - Not Shown</b>		
25	8408-66 Pilot-Light Ready-120V	1	5608-70	Three in 1 Basket Kit w/ Handle	
26	1417-26 Timer Switch Front Panel - ES5PC /PC18	1	5682 -60	Tortilla Rack - Grid Style	
27	8423-22 Push Button Switch	1	5608-72	1/2 Size Basket w/ Handle	
28	5622-00 Name Plate	1	5608-73	Two of 1/4 Size Basket w/ Handle	
29	1403-11 Water Nozzle	1	8450-62	Steam Generator Cleaning Brush	
30	1412-60 Spring for Water Nozzle	1	2070610	Egg Poacher 4 Cup	
31	1402-70 Water Inlet Assembly	1	2070615	Egg Poacher 6 Cup	
32	1408-60 Short Water Tube - ES5PC	1			
33	1409-60 Tube Clip	1			
34	8483-16 1/8F X 1/4T Comp EL	1			

**\* NOTE: Old Timer Style Models - ES5T & ES5T18**

The EmberGlo **ES5T & ES5T18** timer model steamers will not be manufactured after January 2014. The timers in these models are no longer available and were replaced with cubic style timer (CT Timers) models as follows:

ES5T - replace with ES5CT

ES5T18 - replace with ES5CT18

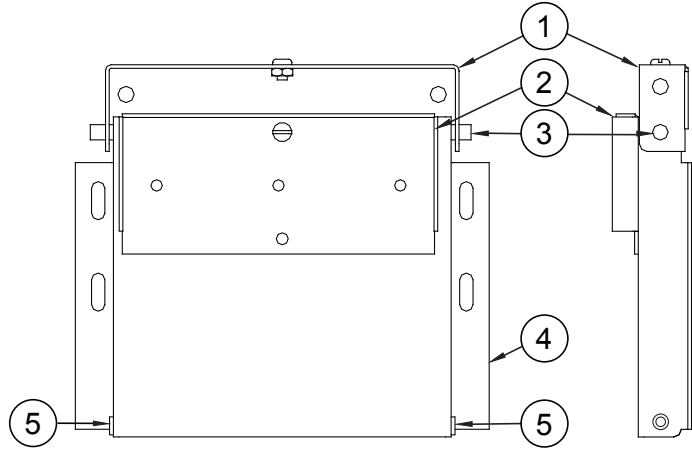
Aside from the timers all of the other parts for the ES5T and ES5T18 remain the same. Call the manufacturer or your local representative for further details or assistance on these old style timer steamers.

# ES5CT, ES5CT18 & ES5PC

## ADJUSTABLE HINGE FOR 2-POSITION LID OPENING (60° OR 90° OPEN)

First construction January 29, 1990 (date code 0590). Steamers built before this date featured a 90° opening lid. Replacement parts for the early construction are no longer available. When replacing order Part Number 1421-45 ADJUSTABLE HINGE RETROFIT KIT.

Part # or Item #	Description	Qty
1	Adjustable Upper Hinge	1
2	Lid Stop Rivetment	1
3	Upper Hinge Bar	1
4	Adjustable Lower Hinge	1
5	5/16" x 3/16" O-Ring	2
Not Shown - (Sold Separately)		
1420-00	Spring bar	2
1420-40	ES5 Hinge Spring	2



★ MADE in the USA ★

*As an ISO 9001:2008 certified company, we proudly design, manufacture and assemble our products in Chicago, Illinois, USA.*

EmberGlo - A Division of Midco International - 4140 West Victoria Street - Chicago, Illinois 60646

toll free: 866 705 0515 - tel: 773.604.8700 - fax: 773.604.4070 - web: [www.emberglo.com](http://www.emberglo.com) - e-mail: [sales@emberglo.com](mailto:sales@emberglo.com)